

**FEATURES:**

- LOW INSERTION LOSS
- HIGH Tx to Rx REJECTION
- LIGHT WEIGHT
- RUGGED CONSTRUCTION

**ELECTRICAL CHARACTERISTICS:**

Operating Frequency Range : 12.750 to 13.250 GHz

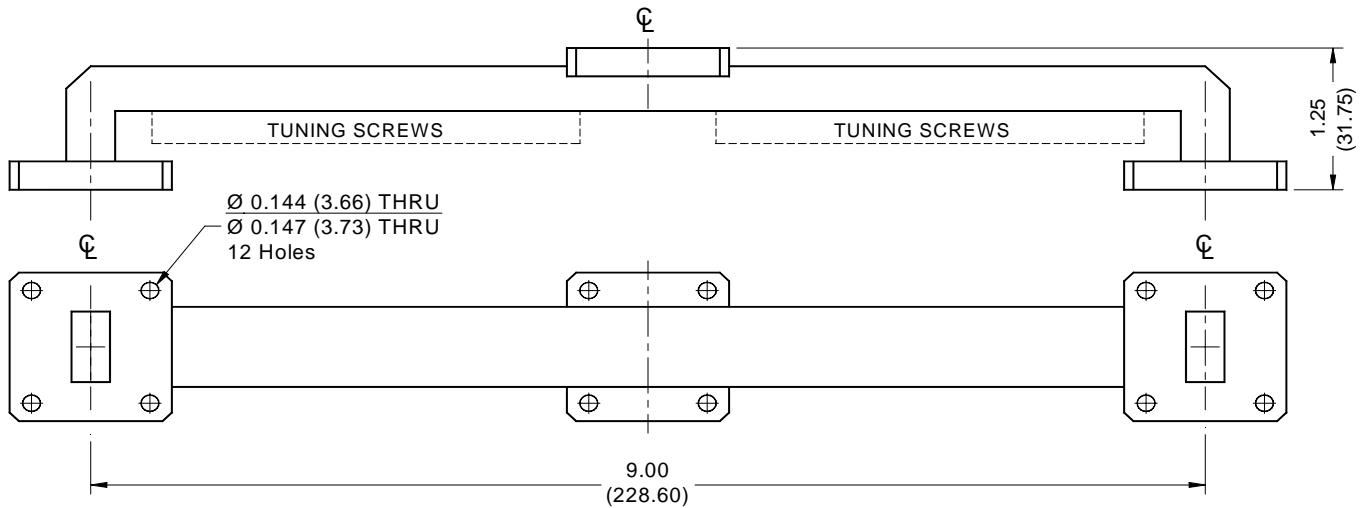
Operating Temperature Range : -30°C to +70°C

Part Number	T/R Spacing	Rx Filt. B.W.	Tx Filt. B.W.	R.L. All Ports	I.L. @ Fo	Rejection Frequency	Tx to Rx Rejection
AD62-0001	420 MHz	147 MHz	147 MHz	15 dB min.	1.25 dB max.	Fo ± 347 MHz	60 dB min.
AD62-0002	475 MHz	160 MHz	160 MHz	15 dB min.	1.25 dB max.	Fo ± 395 MHz	60 dB min.
AD62-0003	478 MHz	210 MHz	210 MHz	15 dB min.	1.25 dB max.	Fo ± 373 MHz	60 dB min.
AD62-0004	482 MHz	164 MHz	149 MHz	15 dB min.	1.25 dB max.	Fo ± 400 MHz	60 dB min.
AD62-0005	490 MHz	168 MHz	168 MHz	15 dB min.	1.25 dB max.	Fo ± 406 MHz	60 dB min.

Specifications are subject to change for continuous improvement.

**MECHANICAL CHARACTERISTICS:**

- a) Dimensions are in inches (millimeters)
- b) Interface: WR62/UG-1665/U Flange
- c) Finish: Silver Plate QQ-S-365 Type II, Grade A
- d) Material: Invar 36% Ni, 64% Fe



**Note: Other Diplexer configurations are available.**