

FEATURES:

- LOW INSERTION LOSS
- HIGH Tx to Rx REJECTION
- LIGHT WEIGHT
- RUGGED CONSTRUCTION

ELECTRICAL CHARACTERISTICS:

Operating Frequency Range : 24.250 to 26.425 GHz

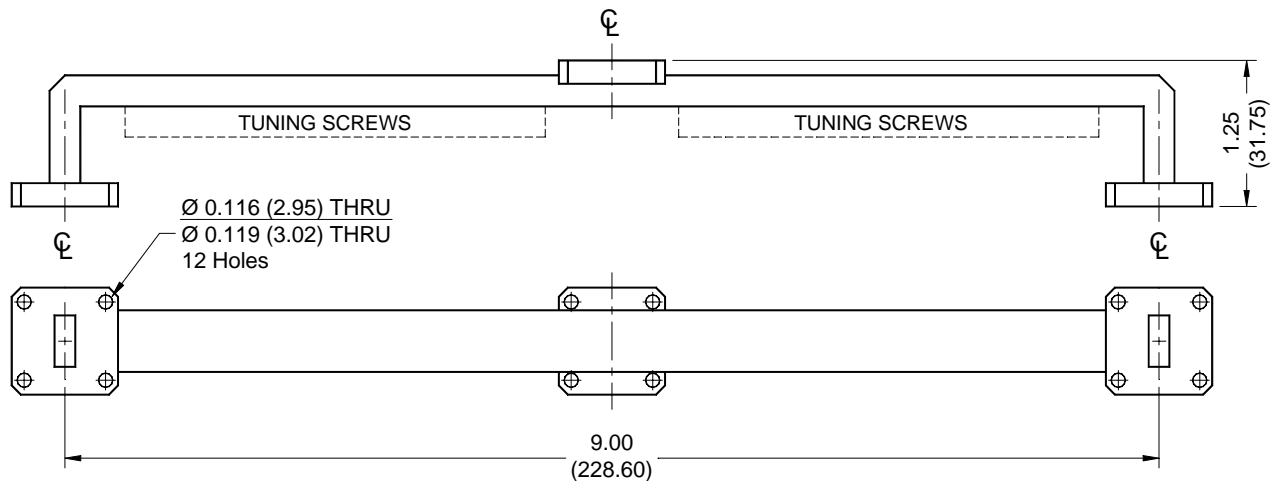
Operating Temperature Range : -30°C to +70°C

Part Number	T/R Spacing	Rx Filt. B.W.	Tx Filt. B.W.	R.L. All Ports	I.L. @ Fo	Rejection Frequency	Tx to Rx Rejection
AD42-0034	800 MHz	200 MHz	200 MHz	15 dB min.	1.25 dB max.	Fo ± 700 MHz	60 dB min.
AD42-0035	1008 MHz	448 MHz	448 MHz	15 dB min.	1.25 dB max.	Fo ± 784 MHz	60 dB min.

Specifications are subject to change for continuous improvement.

MECHANICAL CHARACTERISTICS:

- a) Dimensions are in inches (millimeters)
- b) Interface: WR42/UG-597/U Flange
- c) Finish: Silver Plate QQ-S-365 Type II, Grade A
- d) Material: Invar 36% Ni, 64% Fe



Note: Other Diplexer configurations are available.