

FEATURES:

- LOW INSERTION LOSS
- HIGH Tx to Rx REJECTION
- LIGHT WEIGHT
- RUGGED CONSTRUCTION

ELECTRICAL CHARACTERISTICS:

Operating Frequency Range : 21.200 to 23.600 GHz

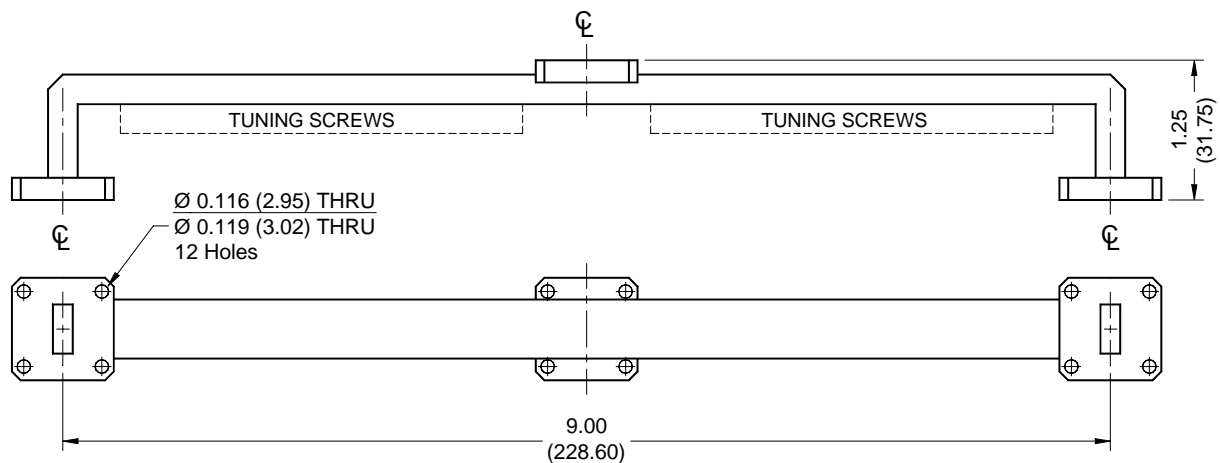
Operating Temperature Range : -30°C to +70°C

Part Number	T/R Spacing	Rx Filt. B.W.	Tx Filt. B.W.	R.L. All Ports	I.L. @ Fo	Rejection Frequency	Tx to Rx Rejection
AD42-0026	896 MHz	364 MHz	367 MHz	15 dB min.	1.20 dB max.	Fo ± 714 MHz	50 dB min.
AD42-0027	896 MHz	537 MHz	532 MHz	15 dB min.	1.20 dB max.	Fo ± 630 MHz	50 dB min.
AD42-0028	1008 MHz	589 MHz	589 MHz	15 dB min.	1.25 dB max.	Fo ± 714 MHz	60 dB min.
AD42-0029	1208 MHz	600 MHz	600 MHz	15 dB min.	1.25 dB max.	Fo ± 908 MHz	60 dB min.
AD42-0030	1208 MHz	616 MHz	616 MHz	15 dB min.	1.25 dB max.	Fo ± 900 MHz	60 dB min.
AD42-0031	1200 MHz	600 MHz	630 MHz	15 dB min.	1.20 dB max.	Fo ± 900 MHz	50 dB min.
AD42-0032	1232 MHz	600 MHz	630 MHz	15 dB min.	1.20 dB max.	Fo ± 932 MHz	50 dB min.
AD42-0033	1274 MHz	600 MHz	600 MHz	15 dB min.	1.20 dB max.	Fo ± 974 MHz	50 dB min.

Specifications are subject to change for continuous improvement.

MECHANICAL CHARACTERISTICS:

- a) Dimensions are in inches (millimeters)
- b) Interface: WR42/UG-597/U Flange
- c) Finish: Silver Plate QQ-S-365 Type II, Grade A
- d) Material: Invar 36% Ni, 64% Fe



Note: Other Diplexer configurations are available.