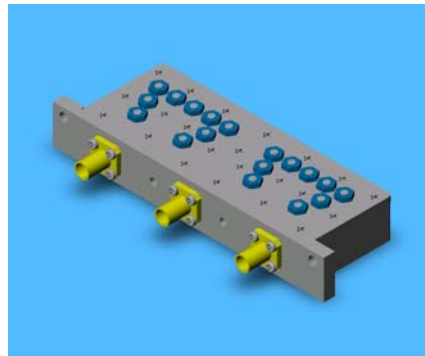


# 13.0GHz Diplexer

ComPlus™ Series

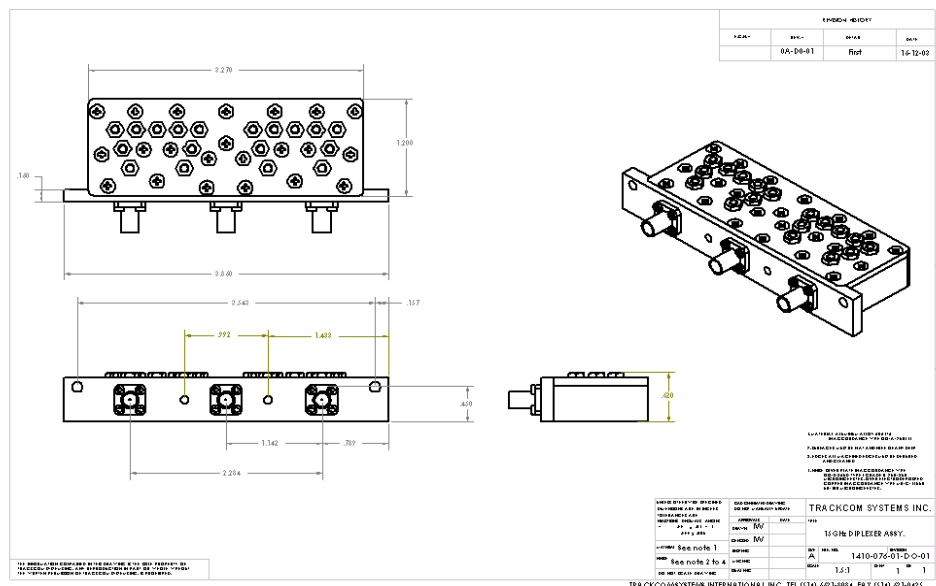
## Feature Summary

- 12500 – 13500 MHz Frequency Band
- Cross coupled resonator design
- Excellent rejection and spurious characteristics
- Lightweight and compact size
- High stability over temperature range
- Easy installation saving money and time



## Overview

The Trackcom Systems International Inc. 12.5 – 13.5GHz diplexer is a high Q structure enabling the achievement of high rejection and very low pass band insertion loss.



## Overall Specification

---

### Low Channel

Specifications	Band	Minimum	Maximum	Units
Pass band	A	12745	12835	MHz
	B	12825	12915	MHz
	C	12905	12995	MHz
Insertion Loss	Fc		-1.6	dB
Return Loss	In Band		-15	dB
TX-RX Isolation			-65	dB

### High Channel

Specifications	Band	Minimum	Maximum	Units
Pass band	A	13011	13101	MHz
	B	13091	13181	MHz
	C	13171	13261	MHz
Insertion Loss	Fc		-1.6	dB
Return Loss	In Band		-15	dB
TX-RX Isolation			-65	dB
Operation Temperature		-40	85	°C



Trackcom Systems International Inc.

2459 46e Avenue Lachine QC H8T 3C9 Canada (888) 840.7297 [www.trackcom-system.ca](http://www.trackcom-system.ca) [info@trackcom-sys.ca](mailto:info@trackcom-sys.ca)